



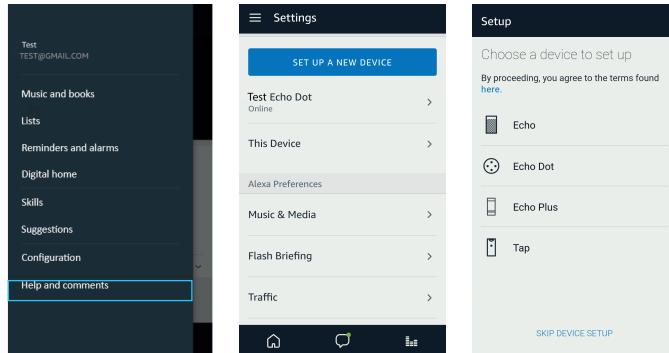


How to configure Amazon Alexa



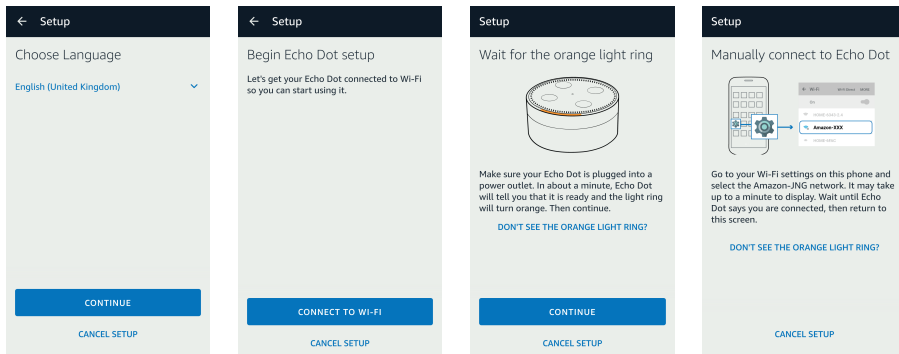
Instructions of the Lights

-  Clearly blue; When we go up or down the volume.
-  Dark blue (combined with clearly blue); Alexa is listening to you.
-  Red; When you have no connection or when you disable the microphone.
-  Orange (moving); When you configure it to connect to the WiFi network.

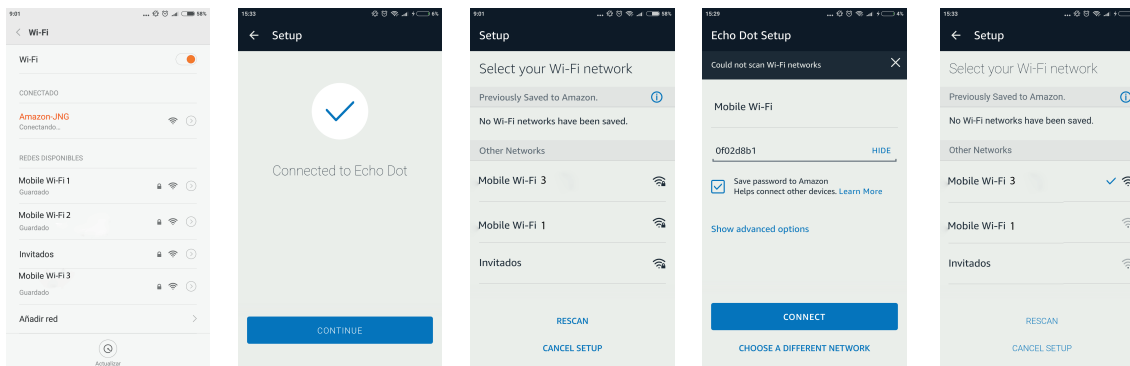


No modification is required in our radiators or in the “Emisor WiFi” APP, but we need a good internet connection.

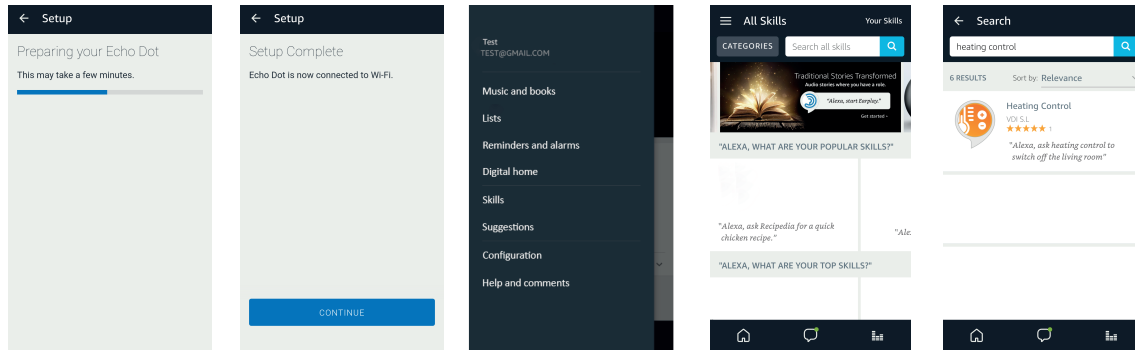
1. Download and install the Amazon Alexa application from the smartphone market.
2. Once installed, click in the 3 horizontal bars that appear in the upper left corner and choose "Configuration".
3. Click in "Set up a new device".
4. Choose our device.



5. Select the language and press “Continue”.
6. After, "Connect to WiFi".
7. Then, press the button + or - during 5 seconds (until Alexa emits an orange light) and press to “Continue”.
8. Now, we have to go out from the application, to access the WiFi settings from our Smartphone and connect to the WiFi that Alexa has created.



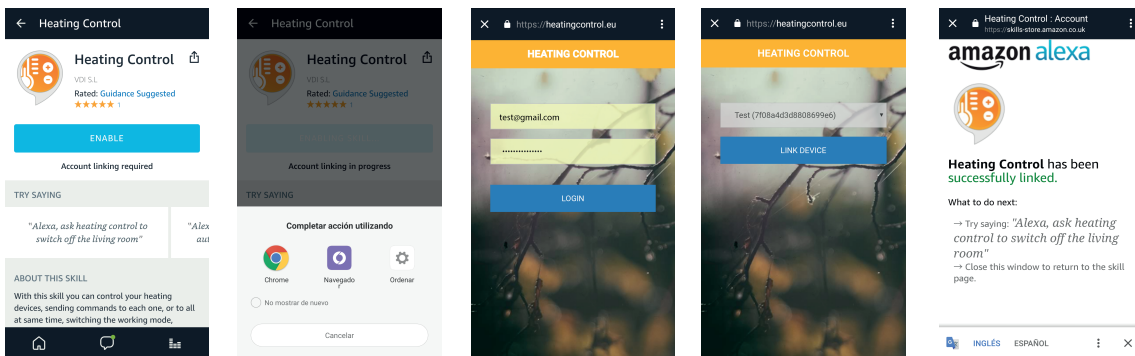
9. We have to return to the application and in a few moments we will see on the screen if we are connected to our device, so click on “Continue”.
10. We will have to choose the WiFi network that we want to link with Alexa.
11. Introduce the password of the WiFi network (you can mark for saving the password for the future).



12. The first screen, will automatically appear and we have to wait until our digital assistant is connected to the WiFi network.

13. Once Alexa is connected, click again on the 3 horizontal lines on the upper left corner, and press on "Skills".

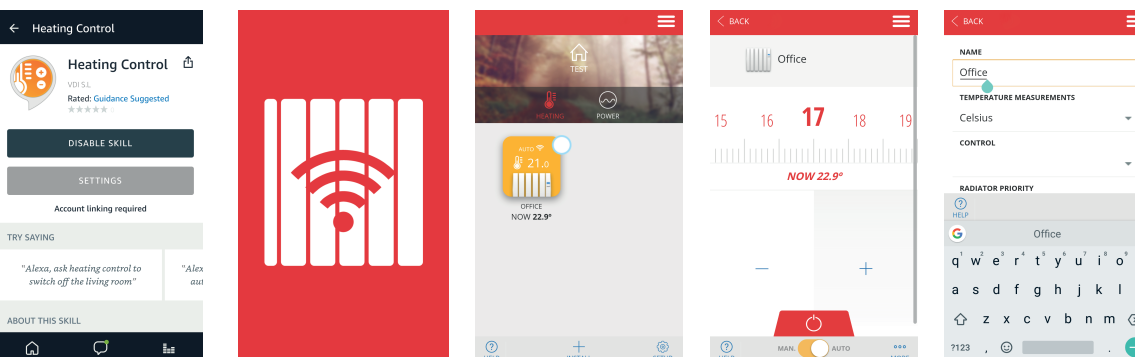
14. In order to control our WiFi radiator with our digital assistant, we need to download the skill "Heating control".



15. Once selected the skill, press "Enable".

16. Will appear the browser, where we have to introduce the user and password (the same as the "Emisor WiFi" APP, if you do not have it, create it) in order to associate the skill with the Wi-Fi app account. And then enter the code of the multilink (you can see it on the backside of the device).

17. Now Alexa is ready to receive orders.



In case of error "disable skill" press again "enable" and repeating the previous process.

18. We have to remember that Alexa works with a command structure; **START + COMMAND + DEVICE/S** (for example: "Alexa, ask heating control to switch off the office").

19. For a correct operation, we have to introduce in the "Emisor WiFi" APP, an english name for our radiator. For this, click on radiator icon, then "more", choose "Setup" and write it on the cell).